

# VERTICAL COLD STORES

Vertical cold stores can be designed to fit any chest freezer or liquid nitrogen vessel (for storage in liquid nitrogen please go to page 29).

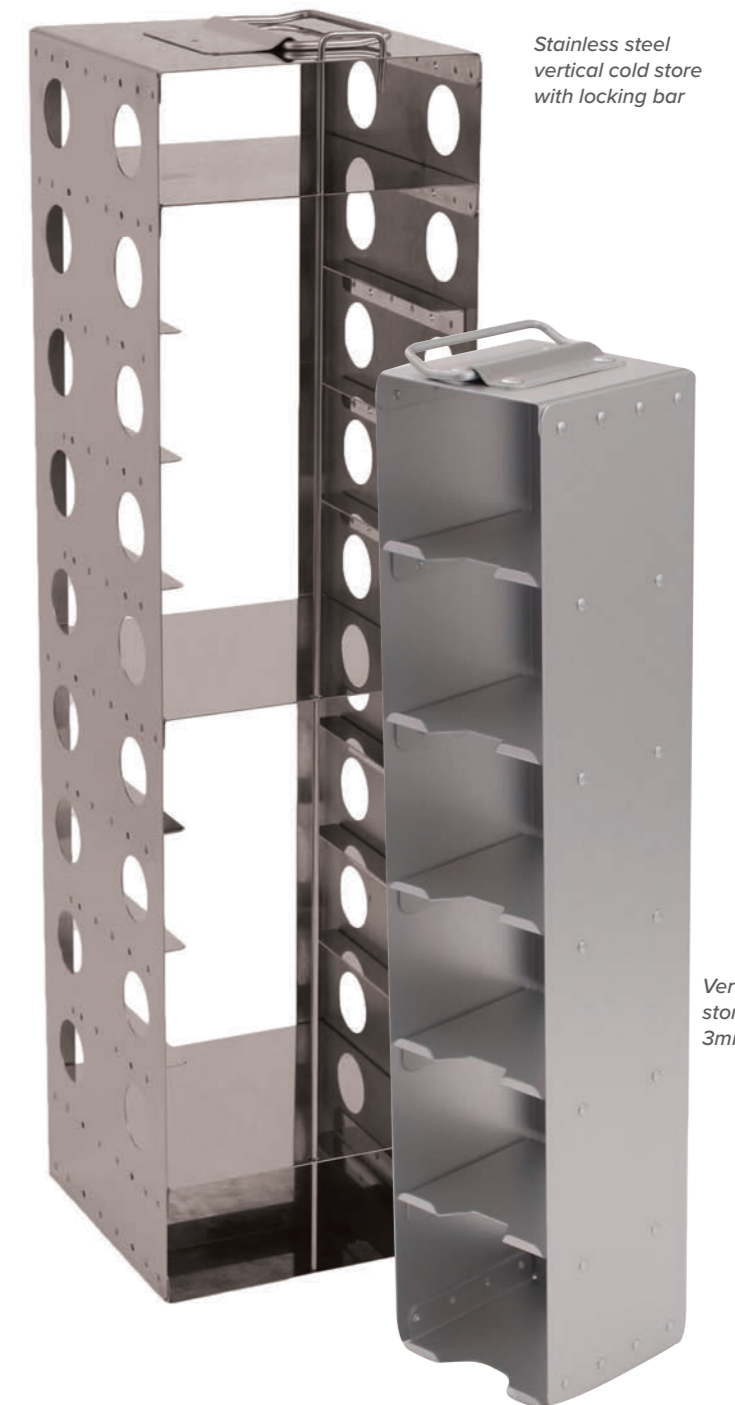
Vertical cold stores come in many different designs and sizes the most popular design is to store cryoboxes, they are available from aluminium or stainless steel. All standard verticals have solid sides or a wraparound body for increased strength there are holes in the back of the unit to push the cryobox out. Verticals are fitted with a fold down handle to allow easy access to remove the unit from the chest freezer. There are different handle designs depending on what is required, a fold down is the most common and available in a 90-degree version to allow more space for the user to access the handle when wearing gloves. Fixed handles are also available which are always in the upright position, the disadvantage of a fixed handle is it can take up extra space within the freezer.

For standard size racks please see the table below or freezer reference guide towards the back of this catalogue, should you require a bespoke rack please complete a quotation request on our website. We will require the details of the make and model of the freezer along with the box size to be stored.

Dimensions (mm)	Box Size / Boxes Per Rack	Part Number
751H x 139W x 136D	2" (50mm) / 13	VC225/13
751H x 139W x 136D	3" (75mm) / 9	VC225/9
751H x 139W x 136D	4" (100mm) / 7	VC225/7
725H x 138W x 142D	2" (50mm) / 13	TWK1SC
725H x 82W x 85D	2" (50mm) / 13	TWK2SC
580H x 140W x 140D	2" (50mm) / 10	CS93/10NL
515H x 140W x 140D	2" (50mm) / 9	VC138/9NL
403H x 140W x 140D	2" (50mm) / 7	VC360/7NL
580H x 140W x 140D	3" (75mm) / 7	CS93/7NL
519H x 140W x 140D	3" (75mm) / 6	VC138/6NL

To hold cryoboxes in place there are many different options. A locking bar is the cheapest option and is most popular for the cost focused end user. Other options include a 3mm lip on the front of the shelf, this holds the boxes and stops them falling forwards, however this will not hold them if the vertical is turned completely on its side. Spring clips are another option to hold boxes, a spring clip is fitted to the side of the vertical and when the box is inserted the clip presses against it holding it in place. Spring clips are capable of holding boxes in place even when the vertical is lying face down. To remove the box, the user has to push it out through the back of the vertical. The spring clip stays fitted to the vertical and is ready when the box has to be returned.

Vertical cold stores can be fitted with engraved labels and coloured handles to help identify them, the following colours are available, black, red, gold, blue and purple.



Stainless steel vertical cold store with locking bar

Vertical cold store with 3mm lip

Vertical cold store with spring clips

Vertical cold store with locking bar and label





# WolfLabs

**Pricing on any accessories shown can be found by keying the part number into the search box on our website.**

The specifications listed in this brochure are subject to change by the manufacturer and therefore cannot be guaranteed to be correct. If there are aspects of the specification that must be guaranteed, please provide these to our sales team so that details can be confirmed.

**[www.wolflabs.co.uk](http://www.wolflabs.co.uk)**

**Tel : 01759 301142**

**Fax : 01759 301143**

**[sales@wolflabs.co.uk](mailto:sales@wolflabs.co.uk)**

Please contact us if this literature doesn't answer all your questions.